



01



02

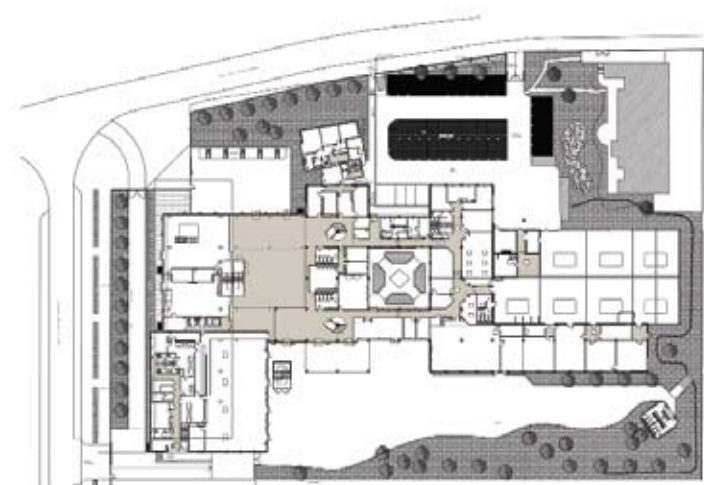
### Louis Armand Secondary School

Behind the perforated aluminum-clad façade, a 1,000 square meter atrium with a height of three stories can be found. Each floor has its own color. The colors meet again in the atrium and form a work of art in the style of Mondrian. The architects have managed to establish a connection between the old and new building to enable a stable educational work.

01 Exterior view | 02 Exterior view | 03 Atrium | 04 Site plan | 05 Atrium | 06 Classroom



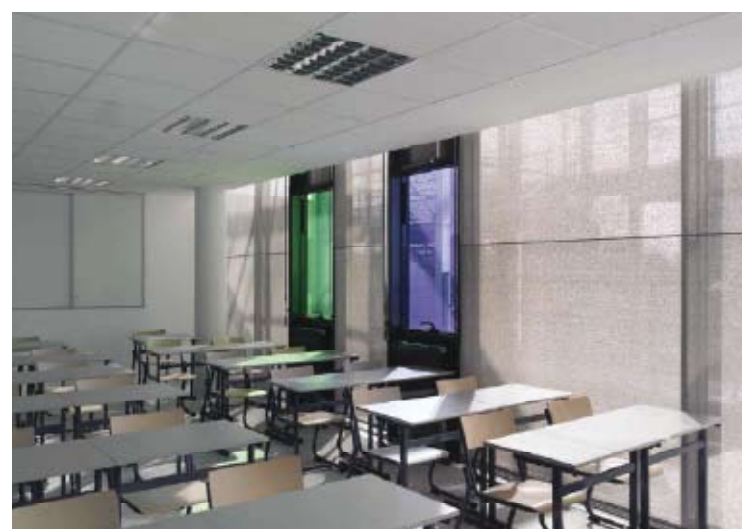
03



04



05



06